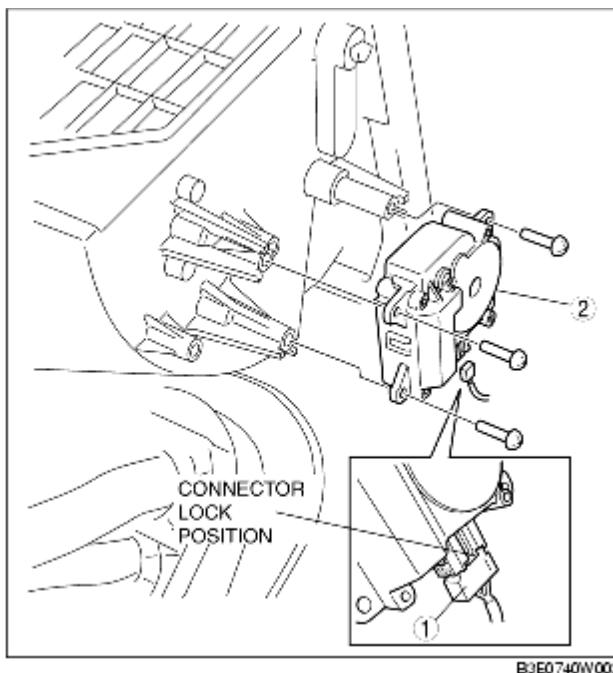


# AIR INTAKE ACTUATOR REMOVAL/INSTALLATION

B3E074061060W01

1. Disconnect the negative battery cable.
2. Remove the following parts:
  - (1) Front scuff plate (See [FRONT SCUFF PLATE REMOVAL/INSTALLATION](#).)
  - (2) Front side trim (See [FRONT SIDE TRIM REMOVAL/INSTALLATION](#).)
  - (3) Decoration panel (See [DECORATION PANEL REMOVAL/INSTALLATION](#).)
  - (4) Glove compartment (See [GLOVE COMPARTMENT REMOVAL/INSTALLATION](#).)
  - (5) Car-navigation unit (See [CAR-NAVIGATION UNIT REMOVAL/INSTALLATION](#).)
3. Slide the blower case to the position shown in the figure. (See [BLOWER MOTOR REMOVAL](#).) (R.H.D.)
4. Remove in the order indicated in the table.

## L.H.D.



## R.H.D.

1	Air intake actuator connector
2	Air intake actuator

5. Install in the reverse order of removal.